

## Logging in using Windows Active Directory

In Sage 200 2013 (v9.0.x) a new feature was introduced to allow Users to log into Sage using their Windows Active Directory credentials rather than a specific User Name and Password set up for Sage. The following is an extract from the online Sage User Guide; full details [here](#).

Extract from Sage 200 online User Guide:

### Logging on to Sage 200

#### On Premise deployments

*Your Windows credentials are used to access Sage 200. When you open Sage 200, you are automatically logged on using your Windows credentials. You only have to enter your Windows user name and password, if the Enforce Login option has been set in System Administration.*

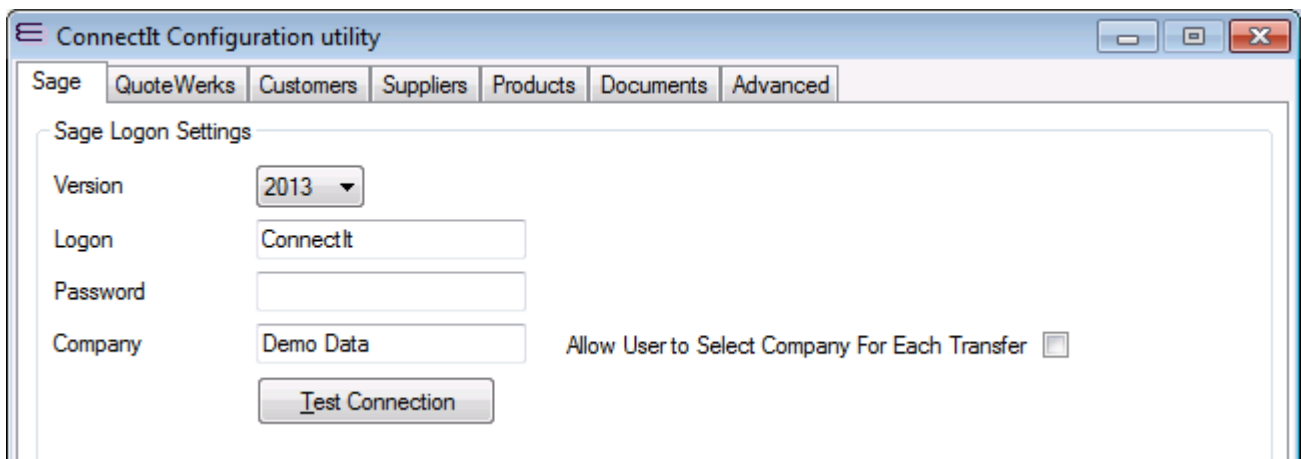
*If you need to be added to the user list, or to change your name, contact your Windows administrator.*

#### Changing users

*If different users need to access Sage 200 from the same PC; the logged on user must close Sage 200 and log off from the PC first. The new user must log on to the PC and then open Sage 200.*

### How this affects ConnectIt

As part of the ConnectIt-Sage200 Configuration settings, we require the User Name and Password for the User. This does not change whether using Active Directory or the Enforce Login option – you should enter your Window User Name and Password into the ConnectIt Configuration settings.



The screenshot shows the 'ConnectIt Configuration utility' window. The 'Sage' tab is selected, and the 'Sage Logon Settings' section is visible. The settings are as follows:

Field	Value
Version	2013
Logon	ConnectIt
Password	
Company	Demo Data

There is also a checkbox labeled 'Allow User to Select Company For Each Transfer' which is currently unchecked. A 'Test Connection' button is located at the bottom of the settings area.

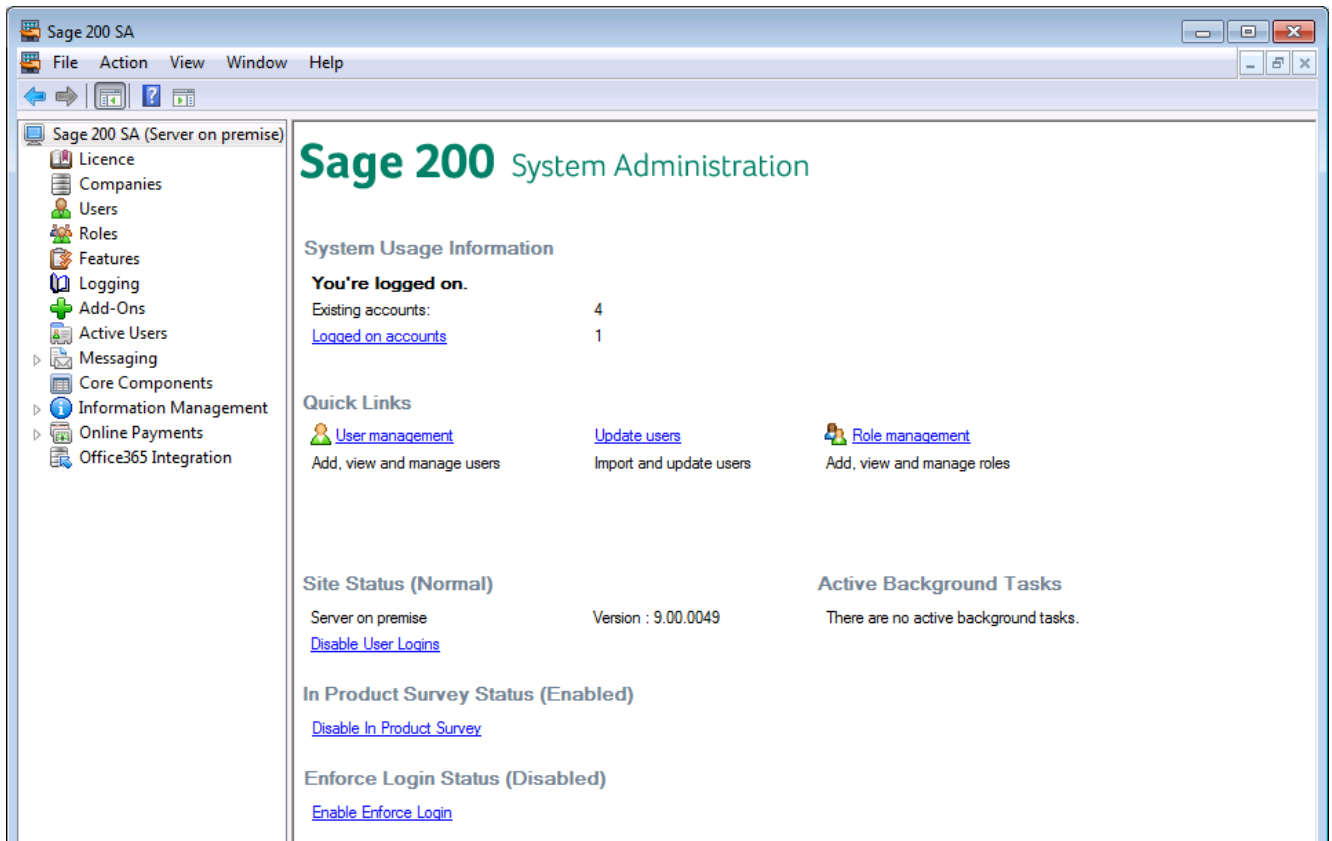
**Note that the above represent the ConnectIt default settings and are not representative of a live system.**

## Notes on Sage 200

The following are notes that you may find useful in understanding whether you are using Active Directory or Enforce Login option and what User Name and Password should be entered for ConnectIt. For more information on these options and screens, please consult your Sage 200 Support team.

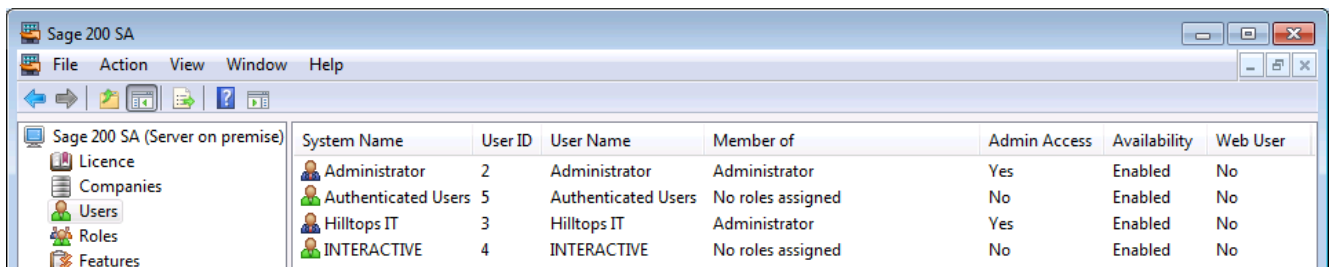
### Using Active Directory or Enforce Login option

If you wish to use the Enforce Login option, then when you log into Sage you will be asked for a User Name and Password. To enable this option, open the Sage 200 System Administration utility, click the top Sage 200 SA (server on premise) option and you will find the Enforce Login Status with option to Enable Enforce Login.



### Identifying your User Name

To identify your User Name, open the Sage 200 System Administration utility, click Users on the left-hand side and all User Names will be listed.



**Note:** the above screenshot represents the User Hilltops IT on a stand-alone PC which is not part of a domain. In a live Sage 200 environment, it is likely that the User Name would be prefixed with the domain name and so should be entered into the ConnectIt Configuration for example as DOMAINUser Name.